

# CIDEON View Manager for SAP

Distinct document labeling when using Display / Copy for document files managed in SAP

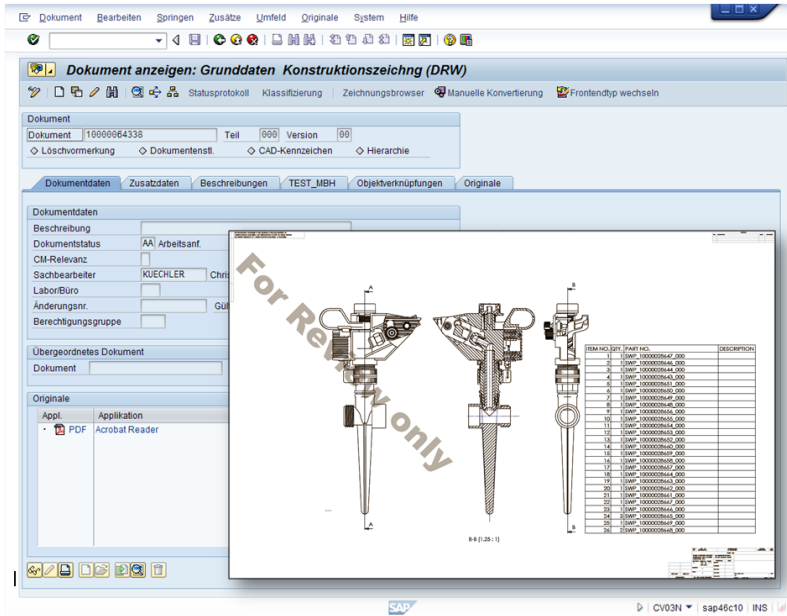


Figure: Individual document preparation for display, here with internal note.

## Advantages:

The unambiguous identification after printing from display programs or the distribution of documents after the copy process (for example, specifications, drawings, etc.) illustrates relevant security functions and ensures correct and smooth process flows within the company.

In many conventional management systems it is exactly at this point that a considerable security gap exists. Access to document files such as the display or copy functions frequently exhibit inadequate tagging functions and therefore lead to significant security risks.

Documents printed from the viewer are distributed without knowing the source, uniqueness and document status.

By using the CIDEON View Managers for SAP the security gap is closed. The View Manager when in operation is fully integrated in the SAP infrastructure system environment and binds the user, the file storage system as well as the current SAP management components.

## Functions:

Using the View Manager every function oriented access (Display, Copy) is registered and appropriate editing functions are active before the illustration in the display program etc. the storage of the document file in the selected directory path.

Text and graphic information (author notes, warnings, company logos) can be placed at the appropriate area in the document.

In conjunction with the CIDEON Output Management the View Manager offers an additional advantage: To date requested WYSIWYG functions (What You See Is What You Get) for printable documents, meaning preview of a later output results, are already available in the CIDEON Output Control Center for SAP. The PDF documents are protected against printing and saving at this point.

How do you identify your documents after printing or after distribution?

Do you distinguish your documents with the document status, the source, as well as copyrights or other relevant data?

Can you prevent various functions (for example no „Print“, no „Modification“) for any documents?

Can you identify subsequent changes in your PDF documents with certainty?

## Contact:

CIDEON Software GmbH  
Peterstrasse 1  
02826 Görlitz

Tel: +49 / 3581 / 3878-0  
Fax: +49 / 3581 / 3878-19

email: info@cideon-software.com  
web: www.cideon-software.com

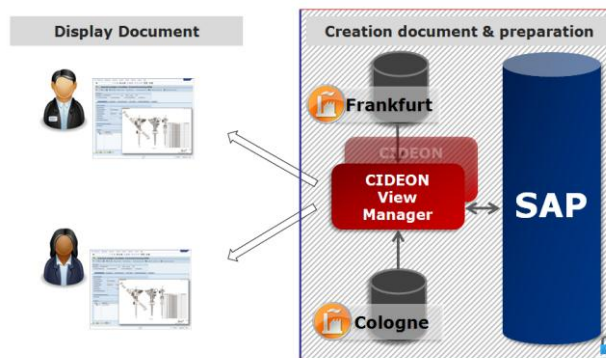
## CIDEON View Manager for SAP at a Glance

### Function overview

Bring up any desired information from SAP into a PDF / TIFF document before display

- **Identification of documents and drawings using available information for**
  - User (name), timestamp (date, time)
  - Document management data, for example: document number, status, user, label, etc.
  - SAP Business object such as type (material, order, customer number, etc.), key (Material number, customer number, contract number, invoice number, etc.), classification data (attribute, rating)
  - Record-/Portfolio data (from SAP Records and Case Management) from the content model in use
- **Bring up water marks, bitmaps, text, logos, barcodes, etc.**
- **Integration of PDF security features** (no print, no copy, no modify, etc.)
- **Graphic stamp editor from CIDEON Output Management** to define font, font size, color, text alignment, position, size, angle, etc.
- **Stamp Options**
  - On all pages, on the first page, not on the first page, on the first and last page, not on the first and last page
- **Display of final documents in CIDEON transactions prior to printing** in conjunction with CIDEON Output Control Center)
- **Support for various SAP document management applications** (e.g. SAP DVS, SAP Knowledge Provider, SAP ArchiveLink)
- **Support for SAP document storage systems**
- (Content Server / Cache Server , Archiv, etc.)
- **Scalable architecture**

### Architecture CIDEON View Manager for SAP



*CIDEON View Manager: Creation and preparation of the documents before display In secure server zone*

### Should you have any additional questions – we have the answer!

How do I ensure a seamless integration in a variety of SAP processes?

How do I ensure file security for my printable documents?

Is there a solution for my special and for me customized output scenarios?

How do I make possible the assignment of output characteristics and output equipment such as hole punch, fold, mirror to a particular distributor ?

Date of issue: February 2012

### CIDEON Output Management for SAP